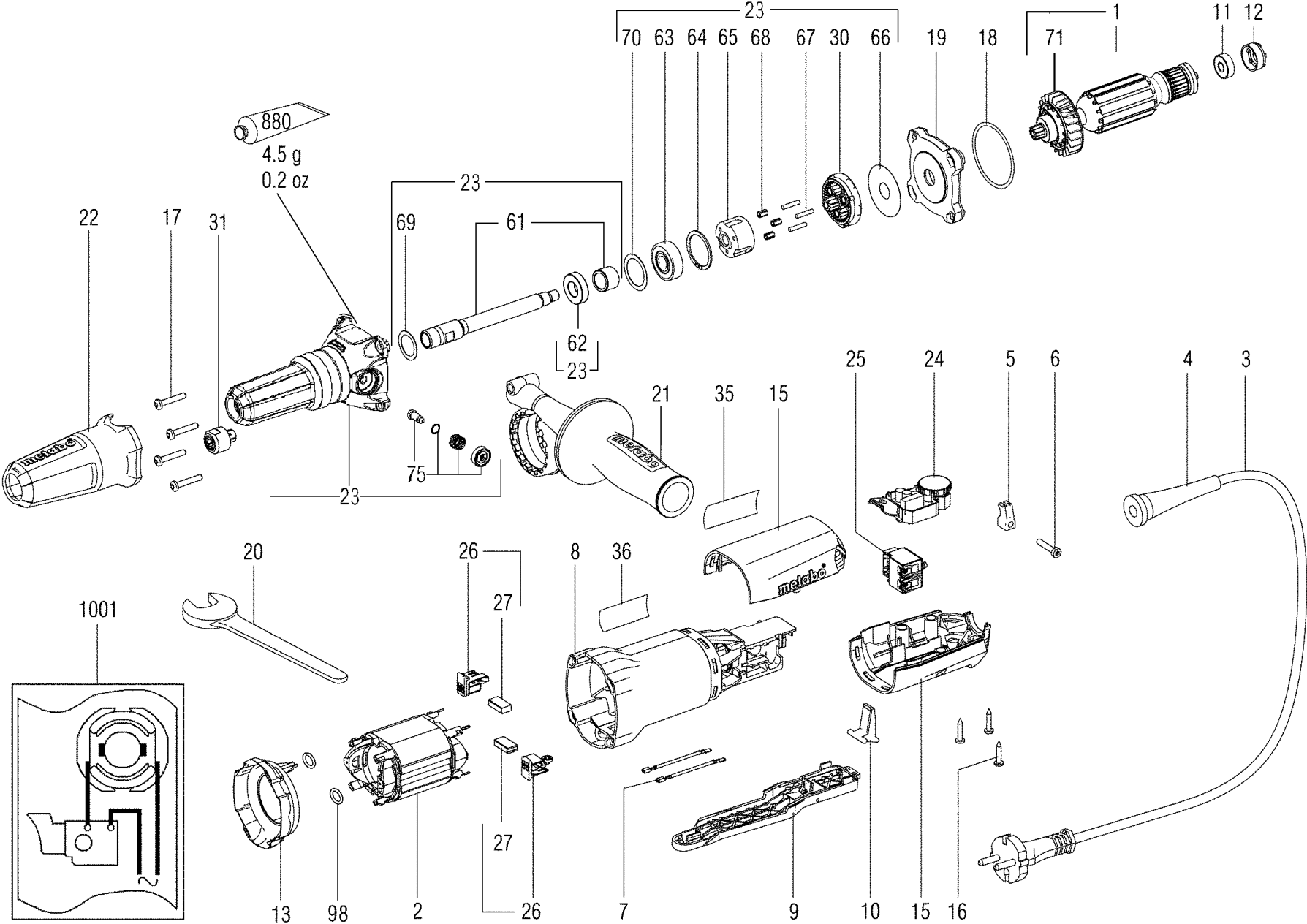


GEP 950 G Plus / 00627000 / TV 00 / EU 230V

Pos.	Part No.	Description	Quant.
1	316063520	Armature compl.,230V	1
2	311009770	Field coil 230 V elec	1
3	344493180	Cable with plug	1
4	344100970	Cable sleeve	1
5	343362490	Cable clip	1
6	141117060	Self-tap. fill. h. screw	1
7	344498880	Strand compl.	2
8	315013660	Motor housing	1
9	316053640	Shift lever compl.	1
10	343437890	Pivoting switch	1
11	143115690	Ball bearing,6x19x6	1
12	344097870	Rubber bushing	1
13	343436590	Baffle	1
15	343433770	Motor cap 2 part	1
16	141113180	Self-tap. fill. h. screw	3
17	141123490	Fillister head screw	4
18	143195470	O-ring	1
19	315202610	Bearing flange	1
20	344160400	Open-end spanner	1
22	344099150	Handle	1
23	316051720	Spindle head compl.	1
24	343082710	Electronic unit,230V	1
25	343409640	Switch	1
26	316046890	Brush holder compl. cut out,230V	2
27	316046900	Carbon brush set cut-off	1
30	316063500	Gear parts compl.	1
31	630820000	Collet 6mm with flange nut (double flat)	1
35	338062540	Rating plate	1

GEP 950 G Plus / 00627000 / TV 00 / EU 230V

Pos.	Part No.	Description	Quant.
36	399999990	Part not needed	1
61	316065220	Spindle head compl.	1
62	143115930	Ball bearing,	1
63	143111090	Ball bearing, 10x30x9	1
64	141180370	Retaining ring	1
66	341080230	Butting washer	1
68	143115450	3eedle roller and cage	3
69	143115490	Compensating washer	1
70	143115470	Compensating washer	1
71	316051700	Luefter mit Staubschutzkorb	1
75	316059800	Spindle lock	1
98	143195530	O-ring	2
880	344130920	Grease 100G	1
1001	338505710	Wiring diagram	1



GEP 950 G Plus / 00627001 / TV 00 / EU 230V

Pos.	Part No.	Description	Quant.
1	316063520	Armature compl.,230V	1
2	311009770	Field coil 230 V elec	1
3	344493180	Cable with plug	1
4	344100970	Cable sleeve	1
5	343362490	Cable clip	1
6	141117060	Self-tap. fill. h. screw	1
7	344498880	Strand compl.	2
8	315013660	Motor housing	1
9	316053640	Shift lever compl.	1
10	343437890	Pivoting switch	1
11	143115690	Ball bearing,6x19x6	1
12	344097870	Rubber bushing	1
13	343436590	Baffle	1
15	343433770	Motor cap 2 part	1
16	141113180	Self-tap. fill. h. screw	3
17	141123490	Fillister head screw	4
18	143195470	O-ring	1
19	315202610	Bearing flange	1
20	344160400	Open-end spanner	1
22	344099150	Handle	1
23	316051720	Spindle head compl.	1
24	343082710	Electronic unit,230V	1
25	343409640	Switch	1
26	316046890	Brush holder compl. cut out,230V	2
27	316046900	Carbon brush set cut-off	1
30	316063500	Gear parts compl.	1
31	630820000	Collet 6mm with flange nut (double flat)	1
35	338062540	Rating plate	1

GEP 950 G Plus / 00627001 / TV 00 / EU 230V

Pos.	Part No.	Description	Quant.
36	399999990	Part not needed	1
61	316065220	Spindle head compl.	1
62	143115930	Ball bearing,	1
63	143111090	Ball bearing, 10x30x9	1
64	141180370	Retaining ring	1
66	341080230	Butting washer	1
68	143115450	3eedle roller and cage	3
69	143115490	Compensating washer	1
70	143115470	Compensating washer	1
71	316051700	Luefter mit Staubschutzkorb	1
75	316059800	Spindle lock	1
98	143195530	O-ring	2
880	344130920	Grease 100G	1
1001	338505710	Wiring diagram	1